



Manufacturing Company, Inc.



GRAIN BAG ROLLER

MODEL: GBR300

MOUNTING INSTRUCTIONS

FOR

AKRON GRAIN BAG UNLOADERS

EXG300, EXG300X, EXG400, EXG400X

GRAIN BAG ROLLER

Manufactured by **DUO LIFT** Mfg. Co., Inc.



MODEL: GBR300 MOUNTED GRAIN BAG ROLLER

The GBR300 Mounted Grain Bag Roller is to be mounted to and used with an Akron EXG300, EXG400, EXG300X and EXG400X Grain Bag Unloader to Roll and Remove an Empty Grain Bag off of a Grain Bag Unloader Roller

- **Dimensions:** 81" Length, 46" Width, 62" Height
- **Weight:** 1065 Lbs.
- **Frame:** 2" x 2" and 3.5" x 3.5" Steel Tubing with (1) Bag Release Hydraulic Cylinder and Twin 3" x 3" Cylinder Guide Rails
- **Bag Rolling Chamber:** 46" Wide x 42" Diameter with (1) Bag Roller Spear
- **Drive:** Hydraulic Drive Motor with Easy to Adjust, Protected Bag Spear Drive Chain, Bag Tensioner, Two Lever Open Center Control Valve and (2) Hydraulic Hoses without Hydraulic Tips. Requires (1) Open Center Hydraulic Remote Outlet for (2) Hoses with 15GPM of Hydraulic Flow Minimum
- **Grain Bag Rolling Capability:** Up to 300' Grain Bag in (1) Bag Roll or 500' Grain Bag in (2) Rolled Bags and will be Approximately 46" Wide x 36" to 46" Diameter.
- **Twine Tie System:** (1) Twine Ball Canister next to Operator Area with Sliding Wrapping Handle to Wrap Twine on Bag and Manually Tie-Off Bag.
- **Mount:** Bolt-On Pivoting Mount with Position Lock and Lever
- **Paint:** Black Color Two Part Polyurethane
- **Shipping:** Fits Inside 8' Pickup Truck Box and Can Be Stacked for Semi Truck Shipment
- **Warranty:** One Year



**NOTE: Grain Bag Roller is to be Used to Roll
EMPTY GRAIN BAGS ONLY!**

DUO LIFT Manufacturing
Company, Inc.

2810 38th Street • Columbus, Nebraska 68601

Phone: 402-564-8023 • FAX: 402-564-5385

Toll Free: 1-800-243-2583

Email: sales@duolift.com • Website: www.duolift.com

Authorized Dealer:

8-01-2019

Mounted GBR300 Grain Bag Roller



Bolt-On Pivoting Mount Quick Release, Easy to Adjust Bag Tensioner



Bolt-On Tongue Jack Bracket, Machine Pivot Lock Handle, and Sliding Twine Wrapping Handle



GBR300 Mounted to an Akron EXG300X Grain Bag Unloader



GBR300 Positioned and Locked in Transport Position

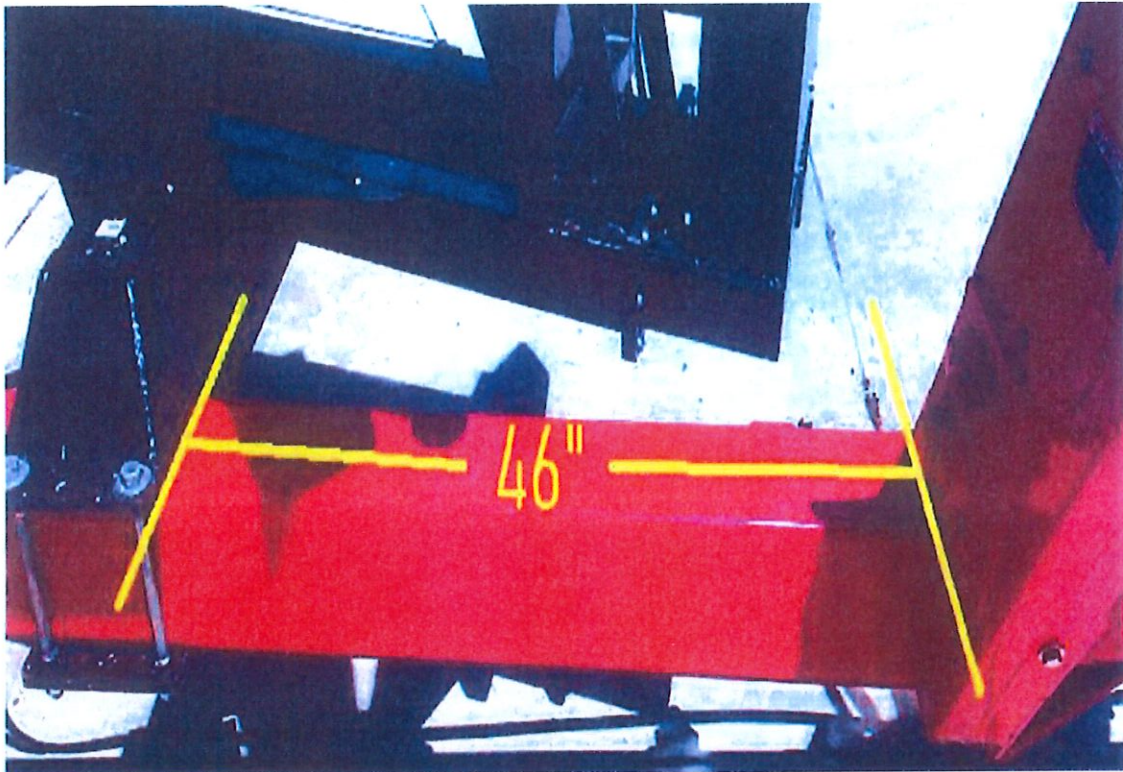


Spear and Rotor Drive System with Easy to Adjust #60 Drive Chain



Rolled and Twine Wrapped Empty Grain Bag from a GBR300

GBR300 Grain Bag Roller Mounting to Akron Grain Bag Unloader Reference Pictures



Position and Secure GBR Mounting Bracket 46" Rearward of PTO Support Structure





GBR300 Position against the Unloader Frame when not in use

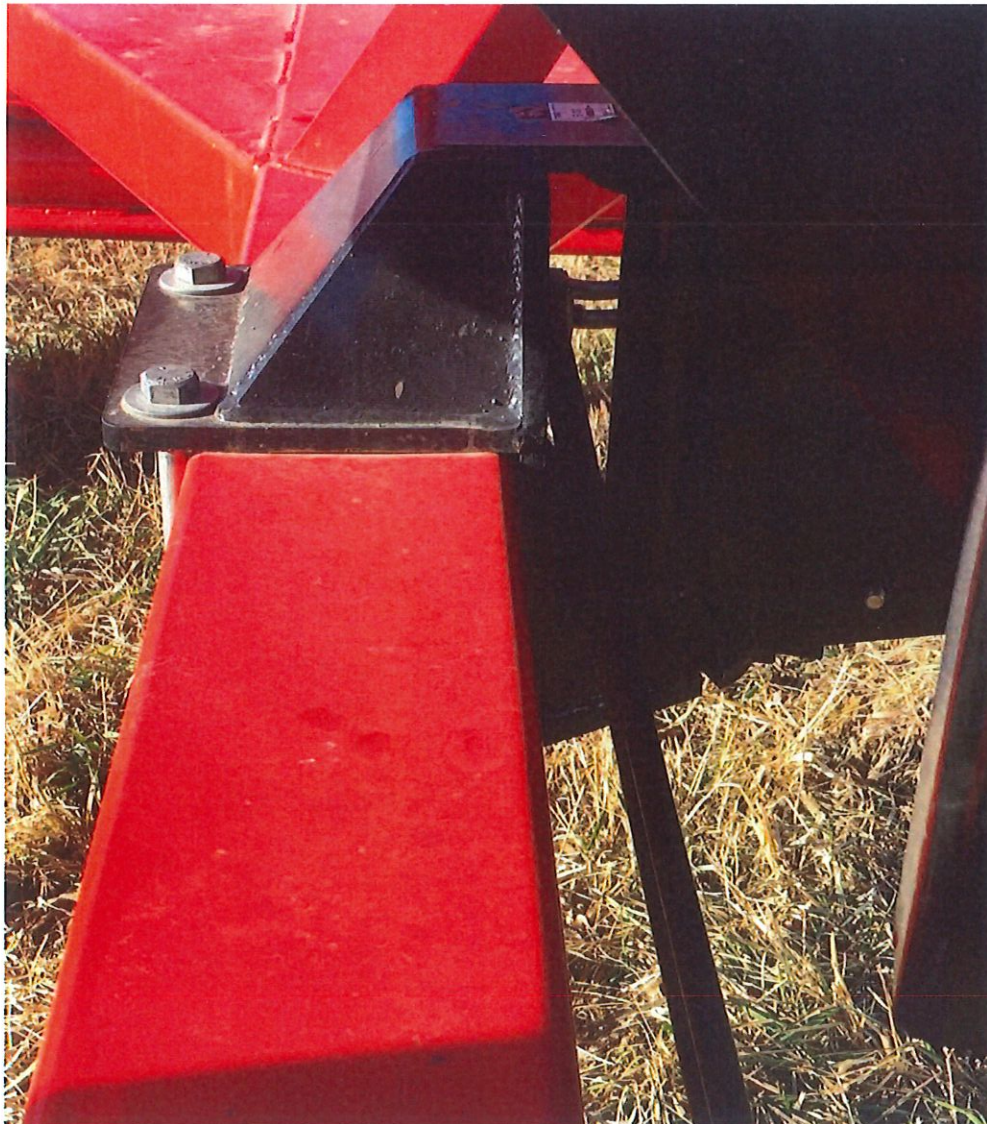


Tongue Jack is relocated with Bracket Provided and located 14-1/2" Forward of PTO Shaft Support Structure

Hoses are Routed through Hose Ring on Bracket



Route Hoses Rearward and secure with Hose Holder installed in original Tongue Jack Location



**Install Steel Shims if provided in the GBR Bracket to position GBR300 as to not contact the Auger on Akron Unloader
(Steel Shims are not shown in the Picture)**



Hoses are secured and routed rearward with Hose Holder provided on GBR Mounting Bracket



Secure Hoses through the Hose Holder on GBR300 Side Sheet



GBR300 Positioning Latch and Latch Handle